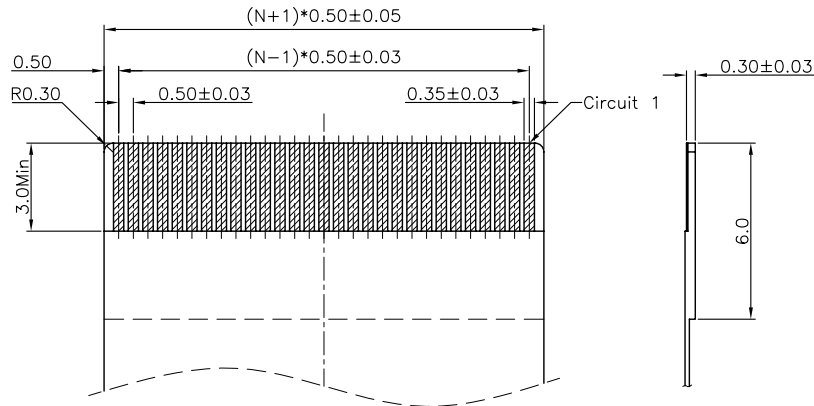
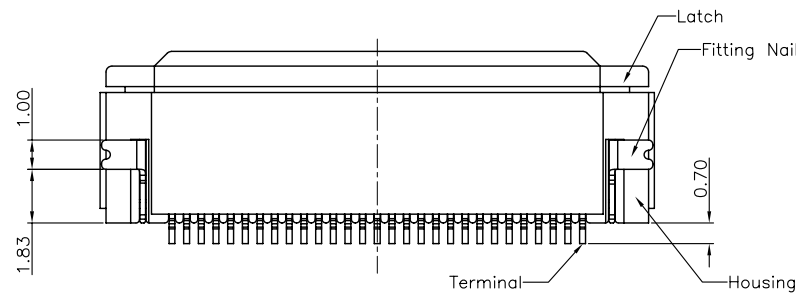
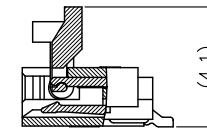
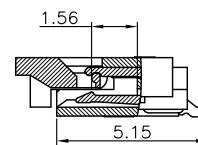
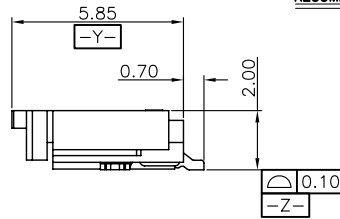
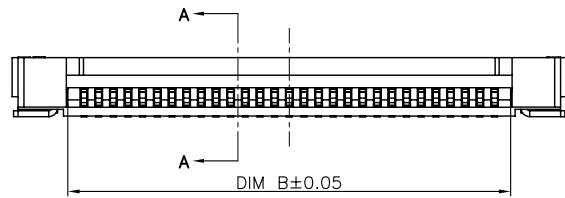


RECOMMENDED P.C.B PATTERN LAYOUT



CKTS	DIM A	DIM B	DIM C
4	1.50	2.60	6.40
5	2.00	3.10	6.90
6	2.50	3.60	7.40
7	3.00	4.10	7.90
8	3.50	4.60	8.40
9	4.00	5.10	8.90
10	4.50	5.60	9.40
11	5.00	6.10	9.90
12	5.50	6.60	10.40
13	6.00	7.10	10.90
14	6.50	7.60	11.40
15	7.00	8.10	11.90
16	7.50	8.60	12.40
17	8.00	9.10	12.90
18	8.50	9.60	13.40
19	9.00	10.10	13.90
20	9.50	10.60	14.40
21	10.00	11.10	14.90
22	10.50	11.60	15.40
23	11.00	12.10	15.90
24	11.50	12.60	16.40
25	12.00	13.10	16.90
26	12.50	13.60	17.40
27	13.00	14.10	17.90
28	13.50	14.60	18.40
29	14.00	15.10	18.90
30	14.50	15.60	19.40
31	15.00	16.10	19.90
32	15.50	16.60	20.40
33	16.00	17.10	20.90
34	16.50	17.60	21.40
35	17.00	18.10	21.90
36	17.50	18.60	22.40
37	18.00	19.10	22.90
38	18.50	19.60	23.40
39	19.00	20.10	23.90
40	19.50	20.60	24.40
41	20.00	21.10	24.90
42	20.50	21.60	25.40
43	21.00	22.10	25.90
44	21.50	22.60	26.40
45	22.00	23.10	26.90
46	22.50	23.60	27.40
47	23.00	24.10	27.90
48	23.50	24.60	28.40
49	24.00	25.10	28.90
50	24.50	25.60	29.40
51	25.00	26.10	29.90
52	25.50	26.60	30.40
53	26.00	27.10	30.90
54	26.50	27.60	31.40
55	27.00	28.10	31.90
56	27.50	28.60	32.40
57	28.00	29.10	32.90
58	28.50	29.60	33.40
59	29.00	30.10	33.90
60	29.50	30.60	34.40

Note:

1. Material:

- 1.1 Housing: thermoplastic high temp.UL94V-0; Color: natural.
- 1.2 Latch: thermoplastic high temp.UL94V-0; Color: black.
- 1.3 Terminal: copper alloy T=0.20mm
- 1.4 Fitting Nail: copper alloy T=0.20mm
- 2.1 Housing: thermoplastic high temp.UL94V-0; Color: black.
- 2.4 Fitting Nail: copper alloy T=0.20mm
- 2.2 Fitting Nail: Underplating: matt Tin overall.

2.2 Fitting Nail: Underplating: matt Tin overall.

3.2 Fitting Nail: comply HF RoHS specification. Underplating: matt Tin overall.

3. Product must comply HF RoHS specification.

PART NO. SPEC

AFC21-SXX X X X-HF

NO. OF CKTS

PACKING CODE

CONTACT TYPE

- A:Tape & Reel
- B:Tray package
- C:Tube
- E:Tape & Reel with Mylar
- F:Box with Mylar
- G:Tube with Mylar

PLATING CODE

- 1:GOLD FLASH 1u"
- 2:GOLD FLASH 2u"
- 3:GOLD FLASH 3u"
- C:MATT-Tin 90-120u"

RECOMMENDED FPC/FFC DIMENSION

CUSTOMER DRAWING

Tolerance Unspecified (未注公差)	Size (图幅): A4
0.0 ±0.15 0° ±5°	Unit (单位): MM
0.00 ±0.10 0° 0 ±3°	Scale (比例): 1:1
0.000 ±0.05 0° 0.00 ±1°	Page (页数): 1 OF 1
Project View (投影视角)	Rev (版本): A

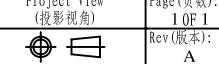


浙江合丰科技有限公司
Zhejiang Hefeng Technology Co.,Ltd

Product Name (产品名称): 0.5Pitch H=2.0 FPC Easy-on CONN. R/A SMT TYPE(G-ZD)

Product No (产品料号): AFC21-S**FCA-HF

Rev 版本	Change Description 变更内容	Date 日期	Revisor 制/修订人
A	初版发行	2011/12/23	Allan



Designer (设计): Steven 12/23/11	Checked (审核): Allan 12/23/11	Approved (核准):
--------------------------------	------------------------------	----------------